

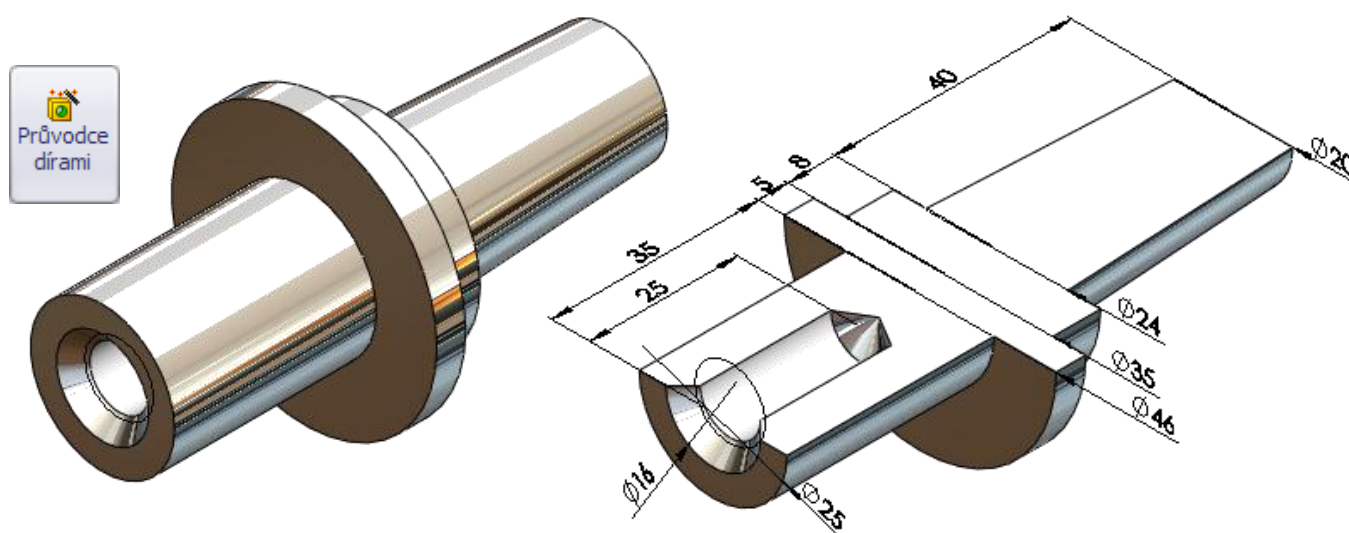


SPINE WITH INTERNAL THREAD

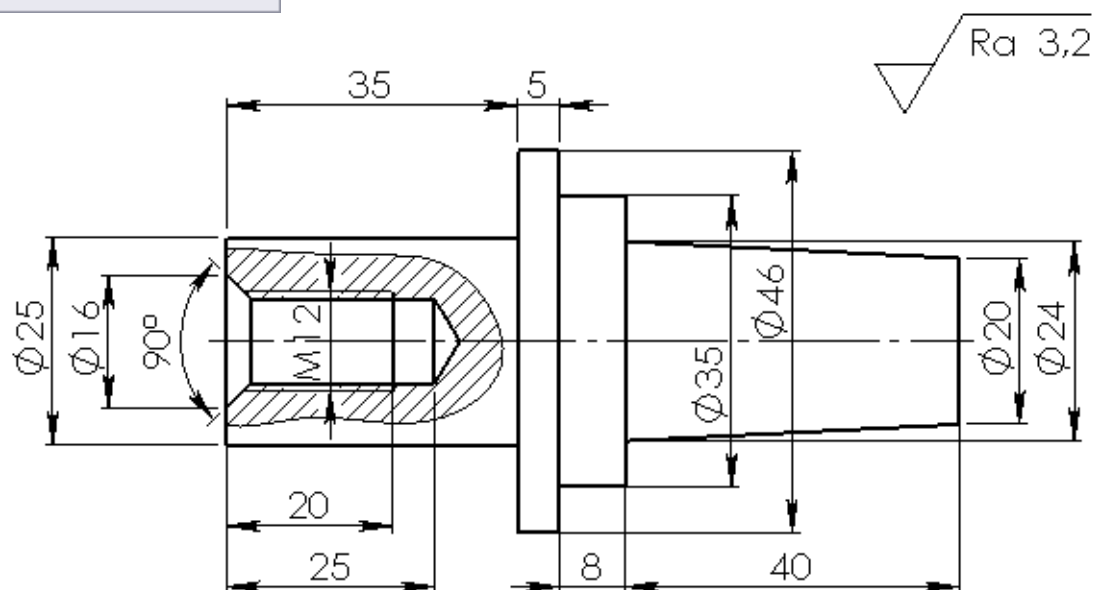
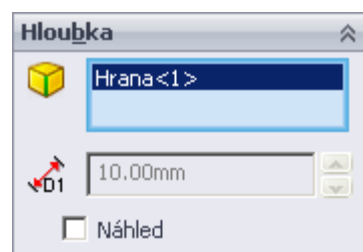
Draw in rectangular reflecting this part which has opening with thread aperture. Thread M12 is in axis of the spine on frontal area and extends to 20mm deep from the front. Edge of the opening has conical countersinking. On the design draw partial cut for opening with aperture in the way, that all data for its production will be defined.

The part is made from chrome stainless steel.

Required quality of surface is 3,2 μm .



SOLUTION



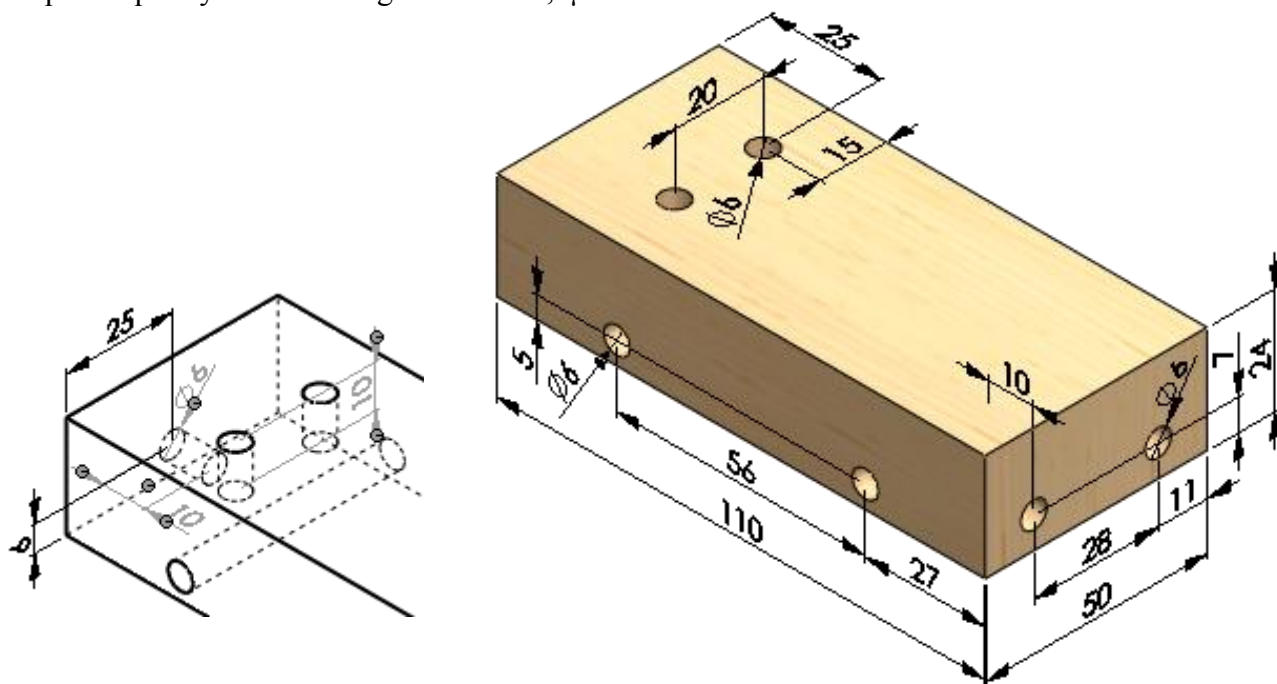


MAPLE BOARD

Draw design of this part in the number of views, which is necessary.

Openings on the area 110x24mm are pass through, other are not pass through (blind) with depth of 10mm and flat bottom. Display visible edges with help of local cuts. Dimension positions and depths of apertures by parametrical dimensions.

Required quality of machining surface is 1,6µm.



SOLUTION

