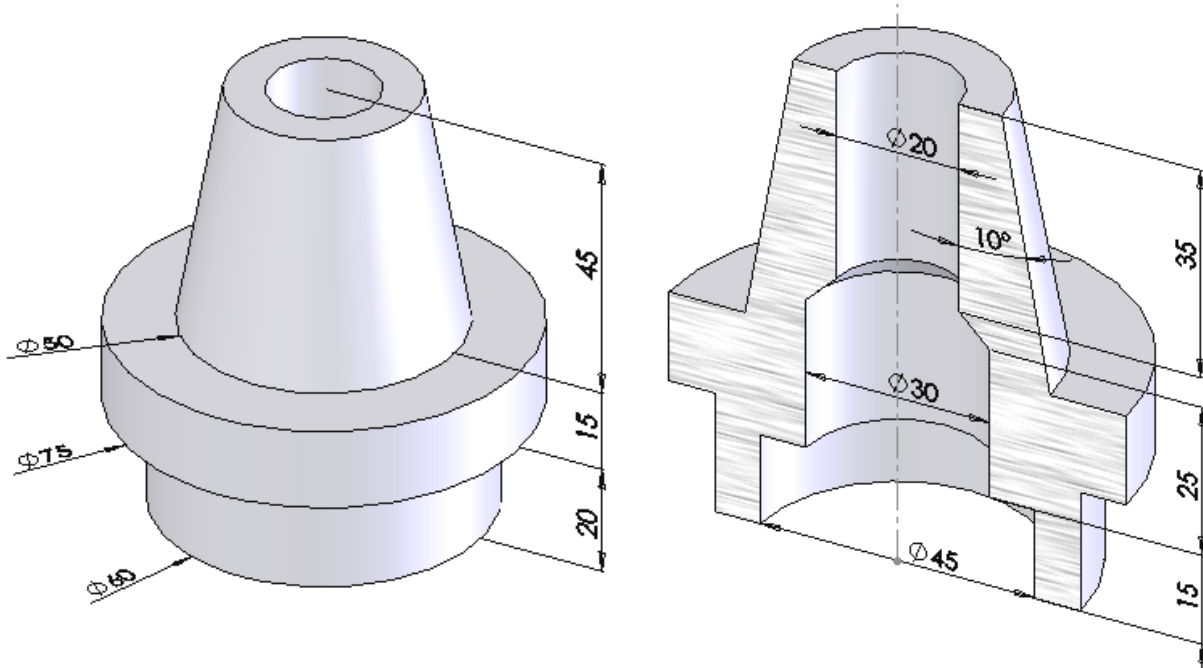




**REEL DISC**

Display REEL DISC in longitudinal cut and draw its complete design. This part is made by turning on the lathe ( ordinary way ) from material 11 500.



**ROLLER WITH APERTURES**

Draw complete design of ROLLER WITH APERTURES in longitudinal cut.

This part was made by turning on the lathe. Apertures, perpendicular to longitudinal axis of the part are drilled – according to the way of machining devise the rough. Material of the part is 12 520 . Diameter of all apertures is the same – 25 mm.

